



MONTHLY MEMBERSHIP PROGRESS REPORT

District 110AZ

Results as of: 6/30/2015

GMT: Elisabeth Haderer

LOCATION NETHERLANDS

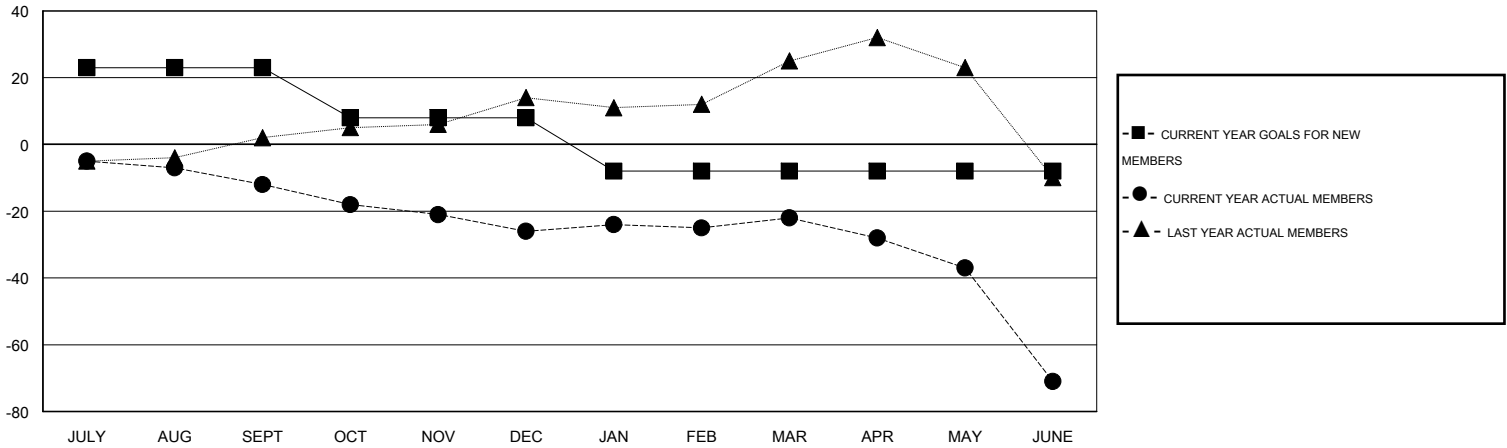
GMT CA 4

Clubs					Members				
RESULTS FOR 2014-2015					RESULTS FOR 2014-2015				
QUARTER	NEW CLUB GOAL	NEW CLUBS	DROPPED CLUBS	NET GAIN/LOSS	QUARTER	NEW MEMBER GOAL	CHARTER AND NEW MEMBERS ADDED	DROPPED MEMBERS	NET GAIN/LOSS
JULY/AUG/SEPT	1	0	0	0	JULY/AUG/SEPT	23	5	17	-12
OCT/NOV/DEC	0	0	0	0	OCT/NOV/DEC	-15	22	36	-14
JAN/FEB/MAR	0	0	0	0	JAN/FEB/MAR	-16	27	23	4
APR/MAY/JUNE	1	0	0	0	APR/MAY/JUNE	0	41	90	-49

GOALS AND ACTUAL NEW CLUBS CUMULATIVE



GOALS AND ACTUAL MEMBERS CUMULATIVE



DROPPED CLUBS: 0	49 CLUBS OF 72 ADDED 1 OR MORE NEW MEMBERS	<u>GENDER DISTRIBUTION</u>	
<u>DROPPED MEMBERS</u>		MALE	1,685 (82.96%)
DECEASED	16	FEMALE	346 (17.04%)
CLUB CANCELLED	0	<u>FAMILY UNIT MEMBERS</u>	
OTHER	150	FAMILY UNIT MEMBERS	
TOTAL	166	HEAD OF HOUSEHOLD	
	CLICK HERE FOR HEALTH ASSESSMENT DATA	NON-HEAD OF HOUSEHOLD	
		FAMILY UNIT MEMBERS	
		HEAD OF HOUSEHOLD	
		NON-HEAD OF HOUSEHOLD	